

DEPARTMENT OF THE ARMY TECHNICAL MANUAL

**GENERAL SUPPORT MAINTENANCE REPAIR PARTS AND SPECIAL TOOLS LISTS
(INCLUDING DEPOT MAINTENANCE REPAIR PARTS AND SPECIAL TOOLS)**

COUPLER TEST SET TS-1661/ASW-12(V)

Headquarters, Department of the Army, Washington, D. C.

23 November 1973

Current as of 15 December 1972

SECTION		<i>Paragraph</i>	<i>Page</i>
I.	INTRODUCTION		
	Scope	1-1.	1-1
	General	1-2.	1-1
	Explanation of columns	1-3.	1-1
	Special Information	1-4.	1-2
	Location of repair parts	1-5.	1-3
	Federal supply codes for manufacturers	1-6.	1-3
	Reporting of equipment publication improvements	1-7.	1-3
II	REPAIR PARTS FOR DIRECT SUPPORT, GENERAL SUPPORT, AND DEPOT MAINTENANCE		2-1
	SPECIAL TOOLS, TEST AND SUPPORT EQUIPMENT FOR GENERAL SUPPORT AND DEPOT MAINTENANCE (Not applicable)		
III.	INDEX-FEDERAL STOCK NUMBER AND REFERENCE NUMBER CROSS REFERENCE TO FIGURE AND ITEM NUMBER OR REFERENCE DESIGNATION		
IV,	INDEX-REFERENCE DESIGNATION CROSS REFERENCE TO PAGE NUMBER		4-1

*This manual supersedes so much of TM 11-6625-443-35P, 17 January 1962, as pertains to TS-1661 /ASW-12(V).

SECTION I INTRODUCTION

1-1. Scope

This manual lists repair parts required for the performance of general support and depot maintenance of the TS-1661 /ASW-12 (V) .

1-2. General

This Repair Parts list is divided into the following sections:

a. **Repair Parts for Direct Support, General Support, and Depot Maintenance-Section II.** A list of repair parts authorized for the performance of maintenance at the general support and depot level.

b. **Index-Federal Stock Number and Reference Number Cross Reference to Figure and Item Number or Reference Designation-Section III.** A list of Federal stock numbers in ascending numerical sequence, followed by a list of reference numbers in ascending alphanumeric sequence, cross-referenced to the illustration figure number and reference designation.

c. **Index-Reference Designation Cross Reference to Page Number-Section IV.** A list of reference designations cross-referenced to page numbers.

1-3. Explanation of Columns

The following provides an explanation of columns in the tabular lists:

a. Source, Maintenance, and Recoverability Codes (SMR), Column 1.

(1) Source code indicates the selection status and source for the listed item. Source codes are:

<i>Code</i>	<i>Explanation</i>
P	Repair parts which are stocked in or supplied from the GSA/DSA, or Army supply system, and authorized for use at indicated maintenance categories.
P2	Repair parts which are procured and stocked for insurance purposes because the combat or military essentiality of the end item dictates that a minimum quantity be available in the supply system.
P9	Assigned to items which are NSA design controlled: unique repair parts, special tools, test measuring and diagnostic equipment, which are stocked and supplied by the Army COMSEC logistic system and which are not subject to the provisions of AR 380-41.
P10	Assigned to items which are NSA design con-

<i>Code</i>	<i>Explanation</i>
	trolled: special tools, test, measuring and diagnostic equipment for COMSEC support, which are accountable under the provisions of AR 380-41, and which are stocked and supplied by the Army COMSEC logistic system.
M	Repair parts which are not procured or stocked, but are to be manufactured at indicated maintenance levels.
A	Assemblies which are not procured or stocked as such, but are made up of two or more units. Such component units carry individual stock numbers and descriptions, are procured and stocked separately, and can be assembled to form the required assembly at indicated maintenance categories.
X	Parts and assemblies which are not procured or stocked and the mortality of which normally is below that of the applicable end item or component. The failure of such part or assembly should result in retirement of the end item from the supply system.
X1	Repair parts which are not procured or stocked. The requirement for such items will be filled by use of the next higher assembly or component.
X2	Repair parts which are not stocked. The indicated maintenance category requiring such repair parts will attempt to obtain same through cannibalization. Where such repair parts are not obtainable through cannibalization, requirements will be requisitioned, with accompanying justification, through normal supply channels.
G	Major assemblies that are procured with PEMA funds for initial issue only as exchange assemblies at DSU and GSU level. These assemblies will not be stocked above DS and GS level or returned to depot supply level.
	(2) Maintenance code indicates the lowest category of maintenance authorized to install the listed item. The maintenance level codes are:
<i>Code</i>	<i>Explanation</i>
C	Operator/crew
O	Organizational maintenance
F	Direct support maintenance
H	General support maintenance
D	Depot maintenance

(3) Recoverability code indicates whether un-serviceable items should be returned for recovery or salvage. Items not coded are expendable. Recoverability codes are:

- | Code | Explanation |
|------|--|
| R | Repair parts and assemblies that are economically repairable at DSU and GSU activities and are normally furnished by supply on an exchange basis. |
| S | Repair parts and assemblies which are economically repairable at DSU and GSU activities and which normally are furnished by supply on an exchange basis. When items are determined by a GSU to be uneconomically repairable, they will be evacuated to a depot for evaluation and analysis before final disposition. |
| T | High dollar value recoverable repair parts which are subject to special handling and are issued on an exchange basis. Such repair parts normally are repaired or overhauled at depot maintenance activities. |
| U | Repair parts specifically selected for salvage by reclamation units because of precious metal content, critical materials, or high dollar value reusable casings or castings. |

b. *Federal Stock Number, Column 2.* Indicates the Federal stock number assigned to the item and will be used for requisitioning purposes.

c. *Description, Column 3.* Indicates the Federal item name and any additional description of the item required. A part number or other reference number is followed by the applicable five-digit Federal supply code for manufacturers in parentheses.

d. *Unit of Measure (U/M), Column 4.* A two-character alphabetic abbreviation indicating the amount or quantity of the item upon which the allowances are based, e.g., ft, ea, pr, etc.

e. *Quantity Incorporated in Unit, Column 5.* Indicates the quantity of the item used in the assembly group. Subsequent appearances of the same item in the same assembly are indicated by the letters "REF."

f. *Allowances (30-Day GS Maintenance, 1 Year Per Equipment (Contingency), and Depot Maintenance) Columns 7, 8 and 9.* Items authorized for requisition as required are identified by an asterisk in the allowance column.

g. *Illustrations, Column 10.*

(1) *Figure number, column 10.* Indicates the figure number of the illustration in which the item is shown.

(2) *Item number or reference designation, column 10.* Indicates the reference designation used to identify the item in the illustration.

1-4. Special Information

a. The following publications pertain to Coupler Test Set TS-1661/ASW-12(V):

TM 11-6625-519-12 Operator and Organizational Maintenance Manual: Test Set, Altitude Control TS-1643/ASW-12(V), Test Set Displacement Gyroscope TS-1644/ASW-12(V), Vibrating Machine Gyroscope MX-3722/ASW-12(V), Test Set, Attitude Reference Control TS-1659/ASW-12(V), Test Set, Coupler TS-1661/ASW-12(V), Test Set, Coupler TS-1662/ASW-12(V), Test Set, Collective Pitch Command Control TS-1651/ASW-12(V), Test Set, Altitude Control TS-1656/ASW-12(V), Test Set, Automatic Controller TS-1658/ASW-12(V), Test Set, Rotary Transducer TS-1657/ASW-12(V), Test Set, Gyro Control TS-1660/ASW-12(V), Table, Tilting, Gyro Instrument Testing MX-4708/ASW-12(V), Fixture, Accelerometer MX-4043/ASW-12(V), Test Set, Interlock Control TS-1738/ASW-12(V), Test Set, Directional Control Panel-Acceleration Monitor TS-912/ASW-12(V).

TM 11-6625-519-34 DS and GS Maintenance Manual: Test Set, Altitude Control TS-1643/ASW-12(V), Test Set, Displacement Gyroscope TS-1644/ASW-12(V), Vibrating Machine Gyroscope MX-3722/ASW-12(V), Fixture, Test, Gyroscope MX-3723/ASW-12(V), Test Set, Attitude Reference Control TS-1659/ASW-12(V), Test Set, Coupler TS-1661/ASW-12(V), Test Set, Coupler TS-1662/ASW-12(V), Test Set, Collective Pitch Command Control TS-1651/ASW-12(V), Test Set, Attitude Control TS-1656/ASW-12(V), Test Set Automatic Controller TS-1658/ASW-12(V), Test Set, Rotary Transducer TS-1657/ASW-12(V), Test Set, Gyro Control TS-1660/ASW-12(V), Table, Tilting, Gyro Instrument Testing MX-4708/ASW-12(V), Fixture, Test, Accelerometer MX-4043/ASW-12(V), Test Set, Interlock Control TS-1738/ASW-12(V), Test Set, Directional Control Panel-Acceleration Monitor TS-912/ASW-12(V).

b. Parts which require manufacture at a category higher than that authorized for installation will indicate in the source column the higher category.

1-5. Location of Repair Parts

a. This manual contains two cross-reference indexes (sec III and IV) to be used to locate a repair part when either the Federal stock number, reference number (manufacturer's part number), or reference designation is known. The first column in each index is prepared in numerical or alphanumeric sequence in ascending order. When a Federal stock number is not listed, or not known, refer to the reference number (manufacturer's part number) immediately following the last listed Federal stock number.

b. When the Federal stock number or reference number is known, follow the procedures given in (1) and (2) below.

(1) Refer to the index of Federal stock numbers and reference numbers (sec III) and locate the Federal stock number or reference number. The Federal stock number or reference number is cross-referenced to the applicable figure and reference designation.

(2) When the reference designation is determined, refer to the reference designation index (sec IV). The reference designations are listed in ascending order and are cross-referenced to the page number on which they appear in the repair parts list (sec II). Refer to the page number noted in the index and locate the reference designation in the repair parts list (col, 10b).

c. When the reference designation is known, follow the procedures given in b(2) above.

d. When neither the Federal stock number, reference number, nor reference designation is known,

identify the part in the illustration and follow directions given in c above; or scrutinize column 3 of the repair parts list (sec II).

1-6. Federal Supply Code for Manufacturers

<i>Code</i>	<i>Manufacturer</i>
00779	Amp Inc.
07187	Sperry Flight Systems, Division of Sperry Rand Corp.
08922	Burdick Corp.
14370	Continental Rubber Works
49956	Raytheon Company
56232	Sperry Gyroscope, Division of Sperry Rand Corp.
58474	Superior Electric Company
72619	Dialight Corp.
76545	Mueller Electric Company
77221	Phaotron Instrument and Electric Company
77820	Bendix Corp.
81349	Military Specifications
82227	A.W. Haydon Company
83003	Varo Inc.
88044	Aeronautical Standards
95236	Continental Connector Corp.
96906	Military Standards
97235	Electromec Instrument Corp.
98291	Sealectro Corp.
98376	Zero Mfg. Company, West Division

1-7. Reporting of Equipment Publication Improvements

The reporting of errors, omissions, and recommendations for improving this publication by the individual user is encouraged. Reports should be submitted on DA Form 2028 (Recommended Changes to Publications) and forwarded direct to Commander, US Army Electronics Command, ATTN: AMSEL-MA-A, Fort Monmouth, NJ 07703.

SECTION II. REPAIR PARTS FOR DIRECT SUPPORT, GENERAL SUPPORT, AND DEPOT MAINTENANCE

(1) SIB CODE	(2) GENERAL STOCK NUMBER	(3) DESCRIPTION REFERENCE NUMBER & MFR. CODE	(4) UNIT OF MEAS	(5) QTY REQ IN UNIT	(6) 30-DAY GS MAINT ALLOWANCE			(7) 90-DAY GS MAINT ALLOWANCE			(8) 1 YR ALM PER EQUIP CMTG CY	(9) DEPOT MAINT ALM PER 100 EQUIP	(10) ILLUSTRATIONS	
					(a) 1-20	(b) 21-50	(c) 51-100	(a) 1-20	(b) 21-50	(c) 51-100			(a) FIG NO.	(b) ITEM NO. OR REFERENCE DE. ILLUSTRATION
	6625-987-8635	TEST SET, COUPLER TO-1661/AEM-12(V) (THIS ITEM IS NONREPENDABLE)											AL	
MD-R		BRACKET YE, ROTATING SHAFT 741860 (56232)	EA	1									ALMP1	
MD-R		BRACKET, ANGLE 2554070 (07147)	EA	1									ALMP2	
M-D		BRACKET, LEVER 2585609 (07187)	EA	1									ALMP3	
P-R-R	55995-482-6321	CABLE ASSEMBLY, SPECIAL, ELE. REC'D 2579037 (07187)	EA	1				*	*	*	*	*	2-1	ALWD
P-R	66145-126-1606	CABLE, SPECIAL, ELECTRICAL C0HGPF-13-0410 (81349)	FT	8				*	*	*	*	*	2-1	ALWDWD
P-R		CLIP, ELECTRICAL 600 (76545)	EA	1				*	*	*	*	*	2-1	ALWDPA
P-R	55940-966-3657	CABLE NIPPLE, ELECTRICAL 02BLACK (76343)	EA	1				*	*	*	*	*	2-1	ALWDEB
P-R	55940-809-4120	TERMINAL LUG ME25036-7 (96906)	EA	1				*	*	*	*	*	2-2	ALWDEZ
P-R-R	55995-432-6313	CABLE ASSEMBLY, SPECIAL, ELECTRICAL 2579037 (07187)	EA	1				*	*	*	*	*	2-1	ALWD
P-R	66145-126-1606	CABLE, SPECIAL ELECTRICAL C0HGPF-13-0410 (81349)	FT	8				*	*	*	*	*	2-1	ALWDWD
P-R		CLIP, ELECTRICAL 600 (76545)	EA	1				*	*	*	*	*	2-1	ALWDPA
P-R	55940-966-3657	CABLE NIPPLE, ELECTRICAL 02BLACK (76343)	EA	1				*	*	*	*	*	2-1	ALWDEB
P-R	55940-809-4120	TERMINAL LUG ME25036-7 (96906)	EA	1				*	*	*	*	*	2-2	ALWDEZ
P-R		CAPACITOR, FIXED, ELECTROLYTIC CE410250K (81349)	EA	1				*	*	*	*	*	2-2	ALD1
MD-R		CASE, TEST SET A211 (98376)	EA	1										ALMP4
P-R	55340-543-4394	CLAMP, LOOP ME21919DG6 (96906)	EA	2				*	*	*	*	*	2-2	ALHL
P-R	55340-598-4201	CLAMP, LOOP ME21919DG11 (96906)	EA	2				*	*	*	*	*	2-2	ALH2
P-R		COUPLING, SHAFT 7416864 (07137)	EA	1				*	*	*	*	*	2-2	ALMP5
P-C	55920-280-4465	FUSE, CARTRIDGE PC2A25CV3AS (81349)	EA	1				*	*	*	*	*	2-1	ALF1
P-C	55920-877-9934	FUSE, CARTRIDGE PC2A25CV3AS (81349)	EA	1				*	*	*	*	*	2-1	ALF1
P-R	55920-892-9311	FUSEHOLDER FH2661 (81349)	EA	1				*	*	*	*	*	2-1	ALXF1
P-R	55920-892-9311	FUSEHOLDER FH2661 (81349)	EA	REF				*	*	*	*	*	2-1	ALXF2
P-R	55325-185-0003	GROMMET, RUBBER ME35489-42 (96906)	EA	2				*	*	*	*	*	2-2	ALH3
P-R		GROMMET, RUBBER 2875 (14370)	EA	1				*	*	*	*	*	2-2	ALH4

SECTION II. REPAIR PARTS FOR DIRECT SUPPORT, GENERAL SUPPORT, AND DEPOT MAINTENANCE (CONTINUED)

(1) SMA CODE	(2) FEDERAL STOCK NUMBER	(3) DESCRIPTION REFERENCE NUMBER & MFR. CODE	(4) UNIT C. MEAS. USABLE IN CODE	(5) QTY R. UNIT	(6) 30-DAY GS MAINT ALLOWANCE			(7) 30-DAY GS MAINT ALLOWANCE			(8) 4 OR EQUIP CUTGEN	(9) DEPOT MAINT ALLOWANCE EQUIP	(10) ILLUSTRATIONS	
					(a) 1-25	(b) 26-50	(c) 51-100	(a) 1-25	(b) 26-50	(c) 51-100			(a) FIG NO.	(b) ILLUSTRATION OR REFERENCE DESCRIPTION
					P-H		HANDLE, BOW 2553985 (07287)	EA	2					
P-H	6210-446-4297	INDICATOR, LIGHT 81-0408-0117-271 (72619)	EA	1				*	*	*	*	*	2-1	ALJ21
P-H	6210-232-8166	INDICATOR, LIGHT 81-0410-112 (72619)	EA	1				*	*	*	*	*	2-1	ALJ22
P-H	6210-232-8166	INDICATOR, LIGHT 81-0410-112 (72619)	EA	REF				*	*	*	*	*	2-1	ALJ23
P-H	6210-232-8166	INDICATOR, LIGHT 81-0410-112 (72619)	EA	REF				*	*	*	*	*	2-1	ALJ24
P-H	6210-232-8166	INDICATOR, LIGHT 81-0410-112 (72619)	EA	REF				*	*	*	*	*	2-1	ALJ25
P-H	6210-232-8166	INDICATOR, LIGHT 81-0410-112 (72619)	EA	REF				*	*	*	*	*	2-1	ALJ26
P-H	6210-232-8166	INDICATOR, LIGHT 81-0410-112 (72619)	EA	REF				*	*	*	*	*	2-1	ALJ27
P-H	6210-232-8166	INDICATOR, LIGHT 81-0410-112 (72619)	EA	REF				*	*	*	*	*	2-1	ALJ28
P-H	5935-702-4199	JACK, TIF M216108-3C (96906)	EA	2				*	*	*	*	*	2-1	ALJ29
P-H	5935-702-4199	JACK, TIF M216108-3C (96906)	EA	REF				*	*	*	*	*	2-1	ALJ30
P-H	5935-702-4199	JACK, TIF M216108-3C (96906)	EA	54				*	*	*	*	*	2-1	ALJ31
P-H	5935-109-0150	JACK, TIF M216108-3C (96906)	EA	REF				*	*	*	*	*	2-1	ALJ32
P-H	5935-109-0150	JACK, TIF M216108-3C (96906)	EA	REF				*	*	*	*	*	2-1	ALJ33
P-H	5935-109-0150	JACK, TIF M216108-3C (96906)	EA	REF				*	*	*	*	*	2-1	ALJ34
P-H	5935-109-0150	JACK, TIF M216108-3C (96906)	EA	REF				*	*	*	*	*	2-1	ALJ35
P-H	5935-109-0150	JACK, TIF M216108-3C (96906)	EA	REF				*	*	*	*	*	2-1	ALJ36
P-H	5935-109-0150	JACK, TIF M216108-3C (96906)	EA	REF				*	*	*	*	*	2-1	ALJ37
P-H	5935-109-0150	JACK, TIF M216108-3C (96906)	EA	REF				*	*	*	*	*	2-1	ALJ38
P-H	5935-109-0150	JACK, TIF M216108-3C (96906)	EA	REF				*	*	*	*	*	2-1	ALJ39
P-H	5935-109-0150	JACK, TIF M216108-3C (96906)	EA	REF				*	*	*	*	*	2-1	ALJ40
P-H	5935-109-0150	JACK, TIF M216108-3C (96906)	EA	REF				*	*	*	*	*	2-1	ALJ41
P-H	5935-109-0150	JACK, TIF M216108-3C (96906)	EA	REF				*	*	*	*	*	2-1	ALJ42
P-H	5935-109-0150	JACK, TIF M216108-3C (96906)	EA	REF				*	*	*	*	*	2-1	ALJ43
P-H	5935-109-0150	JACK, TIF M216108-3C (96906)	EA	REF				*	*	*	*	*	2-1	ALJ44
P-H	5935-109-0150	JACK, TIF M216108-3C (96906)	EA	REF				*	*	*	*	*	2-1	ALJ45
P-H	5935-109-0150	JACK, TIF M216108-3C (96906)	EA	REF				*	*	*	*	*	2-1	ALJ46
P-H	5935-109-0150	JACK, TIF M216108-3C (96906)	EA	REF				*	*	*	*	*	2-1	ALJ47
P-H	5935-109-0150	JACK, TIF M216108-3C (96906)	EA	REF				*	*	*	*	*	2-1	ALJ48
P-H	5935-109-0150	JACK, TIF M216108-3C (96906)	EA	REF				*	*	*	*	*	2-1	ALJ49

SECTION II. REPAIR PARTS FOR DIRECT SUPPORT, GENERAL SUPPORT, AND DEPOT MAINTENANCE (CONTINUED)

(1) SIB CODE	(2) FEDERAL STOCK NUMBER	(3) DESCRIPTION REFERENCE NUMBER & MFR. CODE	(4) UNIT OF MEAS.	(5) QTY REQ. IN UNIT	(6) 30-DAY BS MAINT ALLOWANCE			(7) 30-DAY GS MAINT ALLOWANCE			(8) I PR ALUM PER EQUIP CATGZY	(9) DEPOT MAINT ALY PER 100 EQUIP	(10) FIG NFR.	(11) ILLUSTRATIONS	
					(a) 1-20	(b) 21-50	(c) 51-100	(a) 1-20	(b) 21-50	(c) 51-100				(a) ITEM NO.	(b) OR REFERENCE OR DESIGNATION
P-H	5935-109-0150	JACK, TIP MS16108-3C (96906)	EA	REF				*	*	*	*	*	2-1	ALJ30	
P-H	5935-109-0150	JACK, TIP MS16108-3C (96906)	EA	REF				*	*	*	*	*	2-1	ALJ31	
P-H	5935-109-0150	JACK, TIP MS16108-3C (96906)	EA	REF				*	*	*	*	*	2-1	ALJ32	
P-H	5935-109-0150	JACK, TIP MS16108-3C (96906)	EA	REF				*	*	*	*	*	2-1	ALJ33	
P-H	5935-109-0150	JACK, TIP MS16108-3C (96906)	EA	REF				*	*	*	*	*	2-1	ALJ34	
P-H	5935-109-0150	JACK, TIP MS16108-3C (96906)	EA	REF				*	*	*	*	*	2-1	ALJ35	
P-H	5935-109-0150	JACK, TIP MS16108-3C (96906)	EA	REF				*	*	*	*	*	2-1	ALJ36	
P-H	5935-109-0150	JACK, TIP MS16108-3C (96906)	EA	REF				*	*	*	*	*	2-1	ALJ37	
P-H	5935-109-0150	JACK, TIP MS16108-3C (96906)	EA	REF				*	*	*	*	*	2-1	ALJ38	
P-H	5935-109-0150	JACK, TIP MS16108-3C (96906)	EA	REF				*	*	*	*	*	2-1	ALJ39	
P-H	5935-109-0150	JACK, TIP MS16108-3C (96906)	EA	REF				*	*	*	*	*	2-1	ALJ40	
P-H	5935-109-0150	JACK, TIP MS16108-3C (96906)	EA	REF				*	*	*	*	*	2-1	ALJ41	
P-H	5935-109-0150	JACK, TIP MS16108-3C (96906)	EA	REF				*	*	*	*	*	2-1	ALJ42	
P-H	5935-109-0150	JACK, TIP MS16108-3C (96906)	EA	REF				*	*	*	*	*	2-1	ALJ43	
P-H	5935-109-0150	JACK, TIP MS16108-3C (96906)	EA	REF				*	*	*	*	*	2-1	ALJ44	
P-H	5935-109-0150	JACK, TIP MS16108-3C (96906)	EA	REF				*	*	*	*	*	2-1	ALJ45	
P-H	5935-109-0150	JACK, TIP MS16108-3C (96906)	EA	REF				*	*	*	*	*	2-1	ALJ46	
P-H	5935-109-0150	JACK, TIP MS16108-3C (96906)	EA	REF				*	*	*	*	*	2-1	ALJ47	
P-H	5935-109-0150	JACK, TIP MS16108-3C (96906)	EA	REF				*	*	*	*	*	2-1	ALJ48	
P-H	5935-109-0150	JACK, TIP MS16108-3C (96906)	EA	REF				*	*	*	*	*	2-1	ALJ49	
P-H	5935-109-0150	JACK, TIP MS16108-3C (96906)	EA	REF				*	*	*	*	*	2-1	ALJ50	
P-H	5935-109-0150	JACK, TIP MS16108-3C (96906)	EA	REF				*	*	*	*	*	2-1	ALJ51	
P-H	5935-109-0150	JACK, TIP MS16108-3C (96906)	EA	REF				*	*	*	*	*	2-1	ALJ52	
P-H	5935-109-0150	JACK, TIP MS16108-3C (96906)	EA	REF				*	*	*	*	*	2-1	ALJ53	
P-H	5935-109-0150	JACK, TIP MS16108-3C (96906)	EA	REF				*	*	*	*	*	2-1	ALJ54	

SECTION II. REPAIR PARTS FOR DIRECT SUPPORT, GENERAL SUPPORT, AND DEPOT MAINTENANCE (CONTINUED)

(1) SIC CODE	(2) FEDERAL STORE NUMBER	(3) DESCRIPTION REFERENCE NUMBER & MFR. CODE	(4) UNIT OF MEAS.	(5) QTY INC IN UNIT	(6) 30-DAY QS QUANT ALLOWANCE			(7) 30-DAY QS QUANT ALLOWANCE			(8) IS AN ASSEMBLY PART	(9) DEPOT REPAIR EQUIP CENTER	(10) DEPOT REPAIR EQUIP CENTER	(11) ALL OTHERS	
					(a)	(b)	(c)	(a)	(b)	(c)				(a)	(b)
					1-20	21-50	51-100	1-20	21-50	51-100				TEMP. NO. OF REFERENCE OF SUPPLY	TEMP. NO. OF REFERENCE OF SUPPLY
P-H	5935-109-0150	JACK, TIP MSE108-3C (96906)	EA	REF				*	*	*	*	*	2-1	AL780	
P-H	5935-109-0150	JACK, TIP MSE108-3C (96906)	EA	REF				*	*	*	*	*	2-1	AL786	
P-H	5935-109-0150	JACK, TIP MSE108-3C (96906)	EA	REF				*	*	*	*	*	2-1	AL787	
P-H	5935-109-0150	JACK, TIP MSE108-3C (96906)	EA	REF				*	*	*	*	*	2-1	AL788	
P-H	5935-109-0150	JACK, TIP MSE108-3C (96906)	EA	REF				*	*	*	*	*	2-1	AL789	
P-H	5935-109-0150	JACK, TIP MSE108-3C (96906)	EA	REF				*	*	*	*	*	2-1	AL790	
P-H	5935-109-0150	JACK, TIP MSE108-3C (96906)	EA	REF				*	*	*	*	*	2-1	AL791	
P-H	5935-109-0150	JACK, TIP MSE108-3C (96906)	EA	REF				*	*	*	*	*	2-1	AL792	
P-H	5935-109-0150	JACK, TIP MSE108-3C (96906)	EA	REF				*	*	*	*	*	2-1	AL793	
P-H	5935-109-0150	JACK, TIP MSE108-3C (96906)	EA	REF				*	*	*	*	*	2-1	AL794	
P-H	5935-109-0150	JACK, TIP MSE108-3C (96906)	EA	REF				*	*	*	*	*	2-1	AL795	
P-H	5935-109-0150	JACK, TIP MSE108-3C (96906)	EA	REF				*	*	*	*	*	2-1	AL796	
P-H	5935-109-0150	JACK, TIP MSE108-3C (96906)	EA	REF				*	*	*	*	*	2-1	AL797	
P-H	5935-109-0150	JACK, TIP MSE108-3C (96906)	EA	REF				*	*	*	*	*	2-1	AL798	
P-H	5935-109-0150	JACK, TIP MSE108-3C (96906)	EA	REF				*	*	*	*	*	2-1	AL799	
P-C	5355-559-8943	ENOB 9C-1-2G (49956)	EA	1				*	*	*	*	*	2-1	AL80	
P-C	5355-559-8943	ENOB MSP108-1C2B (96906)	EA	3				*	*	*	*	*	2-1	AL81	
P-C	6240-223-9100	LAMP, GLOW MES1 (81349)	EA	1				*	*	*	*	*	2-1	ALDS2	
P-C	6240-155-8707	LAMP, INCANDESCENT MS15571-6 (96906)	EA	7				*	*	*	*	*	2-1	ALDS1	
P-C	6240-155-8707	LAMP, INCANDESCENT MS15571-6 (96906)	EA	REF				*	*	*	*	*	2-1	ALDS3	
P-C	6240-155-8707	LAMP, INCANDESCENT MS15571-6 (96906)	EA	REF				*	*	*	*	*	2-1	ALDS4	
P-C	6240-155-8707	LAMP, INCANDESCENT MS15571-6 (96906)	EA	REF				*	*	*	*	*	2-1	ALDS5	
P-C	6240-155-8707	LAMP, INCANDESCENT MS15571-6 (96906)	EA	REF				*	*	*	*	*	2-1	ALDS6	
P-C	6240-155-8707	LAMP, INCANDESCENT MS15571-6 (96906)	EA	REF				*	*	*	*	*	2-1	ALDS7	
P-C	6240-155-8707	LAMP, INCANDESCENT MS15571-6 (96906)	EA	REF				*	*	*	*	*	2-1	ALDS8	
M-C		LEAD SET, ELECTRICAL 2589913 (07187)	EA	1				*	*	*	*	*	2-1	ALW3	
P-H		MOTOR, ALTERNATING CURRENT 324154 (82227)	EA	1				*	*	*	*	*	2-2	ALB1	

SECTION II. REPAIR PARTS FOR DIRECT SUPPORT, GENERAL SUPPORT, AND DEPOT MAINTENANCE (CONTINUED)

(1) SIC CODE	(2) FEDERAL STOCK NUMBER	(3) DESCRIPTION REFERENCE NUMBER & MFR. CODE	(4) UNIT OR MEAS	(5) QTY IN UNIT	(6) 30-DAY GS MAINT ALLOWANCE			(7) 30-DAY GS MAINT ALLOWANCE			(8) 1 YR ACR PER EQUIP CATEG	(9) DEPOT MAINT PER EQUIP	(10) ILLUSTRATIONS	
					(a) 1-20	(b) 21-50	(c) 51-100	(a) 1-20	(b) 21-50	(c) 51-100			(a) FIG NO.	(b) ITEM NO. OR REFERENCE DESIGNATION
P-H	5310-857-5547	NUT, SELF-LOCKING, HEXAGON ME203650832A (96906)	EA	1				*	*	*	*	*	2-2	ALR77
P-H		NUT, SELF LOCKING HEXAGON ME203650832A (96906)	EA	2				*	*	*	*	*	2-2	ALR78
P-H	5330-198-6163	PACKING, REFORMED AW6227-1 (38044)	EA	1				*	*	*	*	*	2-2	ALR79
P-H		WIRE, ELECTRICAL MILW16878-2TYPECAWC22BLK (81349)	FT	2				*	*	*	*	*		ALR80
P-H		WIRE, ELECTRICAL MILW16878-2TYPECAWC22BLK(81349)	FT	1				*	*	*	*	*		ALR80
P-H	6145-823-2430	WIRE, ELECTRICAL MILW16878-2TYPECAWC22GRN (81349)	FT	1				*	*	*	*	*		ALR80
P-H		WIRE, ELECTRICAL MILW16878-2TYPECAWC22BLK (81349)	FT	2				*	*	*	*	*		ALR80
P-H		WIRE, ELECTRICAL MILW16878-2TYPECAWC22BLK (81349)	FT	6				*	*	*	*	*		ALR80
M-D		PANEL 2585639 (07137)	EA	1										ALR87
MD-H		PLATE, IDENTIFICATION 258005244 (07187)	EA	1									2-1	ALR88
P-H	5940-356-2493	POST, BINDING DF30RC (58474)	EA	2				*	*	*	*	*	2-1	ALR84
P-H	5940-356-2493	POST, BINDING DF30RC (58474)	EA	REF				*	*	*	*	*	2-1	ALR86
P-H	5940-269-2219	POST, BINDING DF30BC (58474)	EA	2				*	*	*	*	*	2-1	ALR83
P-H	5940-269-2219	POST, BINDING DF30BC (58474)	EA	REF				*	*	*	*	*	2-1	ALR85
P-H	5905-116-8567	RESISTOR, FIXED, COMPOSITION RC20GF750J (81349)	EA	2				*	*	*	*	*	2-1	ALR87
P-H	5905-116-8567	RESISTOR, FIXED, COMPOSITION RC20GF750J (81349)	EA	REF				*	*	*	*	*	2-1	ALR88
P-H	5905-106-9344	RESISTOR, FIXED, COMPOSITION RC20GF101F (81349)	EA	1				*	*	*	*	*	2-2	ALR89
P-H	5905-141-0598	RESISTOR, FIXED, COMPOSITION RC20GF961J (81349)	EA	2				*	*	*	*	*	2-2	ALR85
P-H	5905-141-0598	RESISTOR, FIXED, COMPOSITION RC20GF961J (81349)	EA	REF				*	*	*	*	*	2-2	ALR86
P-H	5905-141-1130	RESISTOR, FIXED, COMPOSITION RC20GF272J (81349)	EA	1				*	*	*	*	*	2-2	ALR81
P-H	5905-103-8348	RESISTOR, FIXED, COMPOSITION RC20GF332J (81349)	EA	3				*	*	*	*	*	2-2	ALR82
P-H	5905-103-8348	RESISTOR, FIXED, COMPOSITION RC20GF332J (81349)	EA	REF				*	*	*	*	*	2-2	ALR83
P-H	5905-103-8349	RESISTOR, FIXED, COMPOSITION RC20GF332J (81349)	EA	REF				*	*	*	*	*	2-2	ALR84
P-H	5905-892-6517	RESISTOR, FIXED, WIRE WOUND RE17CE3010F (81349)	EA	2				*	*	*	*	*	2-2	ALR85
P-H	5905-892-6517	RESISTOR, FIXED, WIRE WOUND RE17CE3010F (81349)	EA	REF				*	*	*	*	*	2-2	ALR86
P-H	5905-857-5333	RESISTOR, FIXED, WIRE WOUND RE17CE10002F (81349)	EA	1				*	*	*	*	*	2-2	ALR86

SECTION II. REPAIR PARTS FOR DIRECT SUPPORT, GENERAL SUPPORT, AND DEPOT MAINTENANCE (CONTINUED)

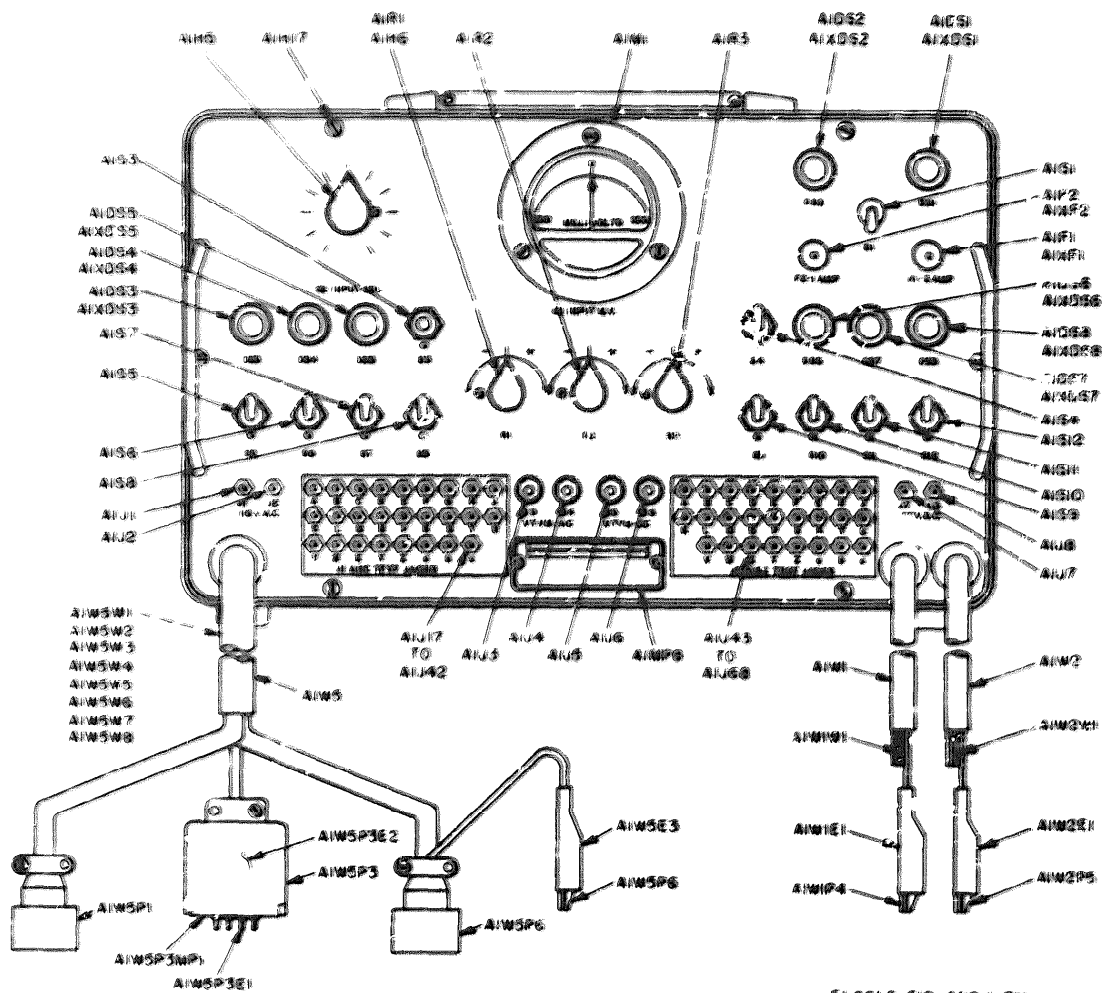
(1) FEDERAL CODE	(2) FEDERAL STGA NUMBER	(3) DESCRIPTION REFERENCE NUMBER & AFR. CODE USABLE ON CODE	(4) UNIT OF MEAS	(5) QTY INC IN UNIT	(6) 30-DAY QS AMOUNT ALLOWANCE			(7) 90-DAY QS AMOUNT ALLOWANCE			(8) 1 OR ALTERNATE EQUIV NOTED	(9) DEPOT AMOUNT PER 100 EQUIP	(10) ILLUSTRATIONS FIG NO.	(11) FROM AFR. OR REFERENCE DESIGNATION
					(a) 1-20	(b) 21-50	(c) 51-100	(a) 1-20	(b) 21-50	(c) 51-100				
F-H	5905-892-6516	RESISTOR, FIXED, WIRE WOUND R95245R10F (83349)	EA	2	*	*	*	*	*	*	2-2	ALR2		
F-H	5905-892-6516	RESISTOR, FIXED, WIRE WOUND R95245R10F (83349)	EA	REF	*	*	*	*	*	*	2-2	ALR2		
F-H		RESISTOR, VARIABLE 30AQG3 (97235)	EA	1	*	*	*	*	*	*	2-2	ALR4		
F-H	5905-530-6532	RESISTOR, VARIABLE R95245R10F (83349)	EA	1	*	*	*	*	*	*	2-2	ALR7		
F-H		RESISTOR, VARIABLE RW61ANSA1030 (81349)	EA	2	*	*	*	*	*	*	2-2	ALR8		
F-H		RESISTOR, VARIABLE RW61ANSA1030 (81349)	EA	REF	*	*	*	*	*	*	2-2	ALR8		
F-H	5905-615-2054	RESISTOR, VARIABLE R403AS1030 (83349)	EA	1	*	*	*	*	*	*	2-1	ALR		
F-H	5905-274-3376	RESISTOR, VARIABLE 738872-1 (96232)	EA	2	*	*	*	*	*	*	2-1	ALR		
F-H	5905-274-3376	RESISTOR, VARIABLE 738872-3 (96232)	EA	REF	*	*	*	*	*	*	2-1	ALR		
F-H	5961-985-4900	SEMICONDUCTOR DEVICE, DIODE 1N64 (83349)	EA	2	*	*	*	*	*	*	2-2	ALR1		
F-H	5961-985-4900	SEMICONDUCTOR DEVICE, DIODE 1N64 (83349)	EA	REF	*	*	*	*	*	*	2-2	ALR1		
F-H	5305-475-3330	SCREW, MACHINE MS35233-14 (96906)	EA	2	*	*	*	*	*	*	2-2	ALR10		
F-H	5305-022-4685	SCREW, MACHINE MS35233-27 (96906)	EA	3	*	*	*	*	*	*	2-2	ALR11		
F-H	5305-054-6653	SCREW, MACHINE MS35233-29 (96906)	EA	6	*	*	*	*	*	*	2-2	ALR13		
F-H		SCREW, MACHINE MS35233-36 (96906)	EA	3	*	*	*	*	*	*	2-2	ALR14		
F-H		SCREW, MACHINE MS35233-36 (96906)	EA	1	*	*	*	*	*	*	2-2	ALR15		
F-H		SCREW, MACHINE MS35233-36 (96906)	EA	1	*	*	*	*	*	*	2-2	ALR16		
F-H	5305-054-6670	SCREW, MACHINE MS35233-45 (96906)	EA	6	*	*	*	*	*	*	2-1	ALR17		
F-H		SWITCH, ROTARY 2503304-928 (07187)	EA	1	*	*	*	*	*	*	2-1	ALS2		
F-H	5930-054-6415	SWITCH, TOGGLE MS35056-22 (96906)	EA	1	*	*	*	*	*	*	2-1	ALS1		
F-H	5930-503-3881	SWITCH, TOGGLE MS35056-30 (96906)	EA	1	*	*	*	*	*	*	2-1	ALS6		
F-H	5930-655-1514	SWITCH, TOGGLE MS35056-22 (96906)	EA	1	*	*	*	*	*	*	2-1	ALS4		
F-H	5930-655-1513	SWITCH, TOGGLE MS35056-22 (96906)	EA	1	*	*	*	*	*	*	2-1	ALS3		
F-H	5930-655-1515	SWITCH, TOGGLE MS35056-22 (96906)	EA	1	*	*	*	*	*	*	2-1	ALS8		

SECTION II. REPAIR PARTS FOR DIRECT SUPPORT, GENERAL SUPPORT, AND DEPOT MAINTENANCE (CONTINUED)

(1) SQA CODE	(2) FEDERAL STOCK NUMBER	(3) DESCRIPTION USABLE OR CODE	(4) UNIT OF MEAS	(5) QTY INC IN UNIT	(6) 30-DAY GS MAINT ALLOWANCE						(8) R YR ALW PER EQUIP ENTRCE	(9) DEPOT MAINT ALW PER EQUIP	(10) ILLUSTRATIONS	
					(a) 1-20		(b) 21-50		(c) 51-100				(4) FILE NO.	(5) ITEM NO. OR REFERENCE OR SYMBOL
					(a) 1-20	(b) 21-50	(c) 51-100	(a) 1-20	(b) 21-50	(c) 51-100				
P-H	5930-655-1517	SWITCH, TOGGLE MS3058-26 (96906)	EA	1			*	*	*	*	*	2-1	2057	
P-H	5930-655-1521	SWITCH, TOGGLE MS3058-29 (96906)	EA	5			*	*	*	*	*	2-1	AD55	
P-H	5930-655-1521	SWITCH, TOGGLE MS3058-29 (96906)	EA	REF			*	*	*	*	*	2-1	5159	
P-H	5930-655-1521	SWITCH, TOGGLE MS3058-29 (96906)	EA	REF			*	*	*	*	*	2-1	AD510	
P-H	5930-655-1521	SWITCH, TOGGLE MS3058-29 (96906)	EA	REF			*	*	*	*	*	2-1	AD511	
P-H	5930-655-1521	SWITCH, TOGGLE MS3058-29 (96906)	EA	REF			*	*	*	*	*	2-1	AD512	
P-H	5940-577-7243	TERMINAL, STUD STMC02PL6 (90011)	EA	28			*	*	*	*	*	2-2	ADL	
P-H	5950-074-4635	TRANSFORMER, POWER, STEP-DOWN 950-1JLL-400 (83002)	EA	1			*	*	*	*	*	2-2	ADTL	
P-H		VOLTMETER 300-09679 (77221)	EA	1			*	*	*	*	*	2-1	ADAL	
P-H		WASHER, NONMETALLIC 29378 (56232)	EA	2			*	*	*	*	*	2-2	ADH18	
P-H		WASHER, FLAT 0138-7 (56232)	EA	2			*	*	*	*	*	2-2	ADH19	
P-H		WASHER, LOCK 0164-4 (07187)	EA	2			*	*	*	*	*	2-2	ADH20	
P-H	5310-929-6395	WASHER, LOCK MS3338-136 (96906)	EA	7			*	*	*	*	*	2-2	ADH21	
M-H		WIRING, HARNESS, BRANCHED 2585913 (07137)	EA	1									ALW4	
P-H		CABLE, SPECIAL, ELECTRICAL 2695302AWC22RED (07187)	FT	0			*	*	*	*	*		ALW4WD	
P-H	5940-280-3829	FERRULE, RF CABLE, GROUNDING Y0C80 (09922)	EA	9			*	*	*	*	*		ALW4E2	
P-H	5940-502-7688	FERRULE, RF CABLE, GROUNDING Y0C90 (09922)	EA	9			*	*	*	*	*		ALW4E2	
P-H	5940-615-8954	FERRULE, RF CABLE, GROUNDING Y1C07L (09922)	EA	10			*	*	*	*	*		ALW4E3	
P-H	5940-230-9911	SPLICE, CONDUCTOR 34138 (00779)	EA	1			*	*	*	*	*		ALW4E4	
M-H		WIRING, HARNESS, BRANCHED 2585914 (07187)	EA	1									ALW5	
P-H		CLIP, ELECTRICAL 30C (76545)	EA	1			*	*	*	*	*	2-1	ALW5F6	
P-H	5935-903-3513	CONNECTOR, PLUG, ELECTRICAL PT06210-263WR (77820)	EA	1			*	*	*	*	*	2-1	ALW5P1	
P-H	5935-061-3074	CONNECTOR, PLUG, ELECTRICAL PT06210-263YR (77820)	EA	1			*	*	*	*	*	2-1	ALW5P2	
P-H		WIRE, ELECTRICAL QQW343TYPESFTSNBLK (81349)	FT	40			*	*	*	*	*		ALW4WD	
P-H		WIRE, ELECTRICAL QQW343TYPESFTSNRED (81349)	FT	10			*	*	*	*	*		ALW4WD	

SECTION II. REPAIR PARTS FOR DIRECT SUPPORT, GENERAL SUPPORT, AND DEPOT MAINTENANCE (CONTINUED)

(1) GPO CODE	(2) FEDERAL SUPPLY NUMBER	(3) DESCRIPTION USABLE UN CODE	(4) UNIT OF MEASURE	(5) QTY IN UNIT	(6) RD-DMA DIS AMOUNT ALLOWANCE			(7) RD-DMA GS AMOUNT ALLOWANCE			(8) A OR AN PER CENTAGE	(9) DEPOT AMOUNT PER CENT	(10) ALLIANCE CODES	
					(2)	(3)	(4)	(5)	(6)	(7)			(8)	(9)
					1-20	21-30	31-40	1-20	21-30	31-40			1-10	11-20
		WIRE, ELECTRICAL QQW343TYPESSOFTSNBLK (81349)	FT	7	*	*	*	*	*	*			ALW5W5	
		WIRE, ELECTRICAL QQW343TYPESSOFTSNBLK (81349)	FT	6	*	*	*	*	*	*			ALW5W5	
		WIRE, ELECTRICAL QQW343TYPESSOFTSNBLK (81349)	FT	25	*	*	*	*	*	*			ALW5W5	
		WIRE, ELECTRICAL QQW343TYPESSOFTSNBLK (81349)	FT	25	*	*	*	*	*	*			ALW5W5	
	5940-762-6255	TERMINALS, OF CABLE, GROUNDING TYPE 200 (99522)	EA	4	*	*	*	*	*	*			ALW5W5	
	5940-549-6220	TERMINALS, OF CABLE, GROUNDING TYPE 200 (99522)	EA	4	*	*	*	*	*	*			ALW5W5	
		GROMMET, RUBBER 2675 (14370)	EA	3	*	*	*	*	*	*			ALW5W5	
	5940-966-3657	CABLE, NIPPLE, ELECTRICAL TYPE 200 (99522)	EA	3	*	*	*	*	*	*			ALW5W5	
		CONNECTOR AND SHIELD ASSEMBLY 2554095 (07287)	EA	3	*	*	*	*	*	*			ALW5W5	
		HOLDER, PROBE 2554025 (07287)	EA	3	*	*	*	*	*	*			ALW5W5	
		PROBE, TEST FTWFWRITE (98291)	EA	14	*	*	*	*	*	*			ALW5W5	
	5935-575-2358	SHIELD, ELECTRICAL CONNECTOR TYPE 200 (99522)	EA	3	*	*	*	*	*	*			ALW5W5	
	5940-665-9530	SPLICE, CONNECTOR TYPE 200 (99522)	EA	3	*	*	*	*	*	*			ALW5W5	
	5940-809-4120	TERMINAL LUG TYPE 200 (99522)	EA	3	*	*	*	*	*	*			ALW5W5	
		WIRE, ELECTRICAL QQW343TYPESSOFTSNBLK (81349)	FT	40	*	*	*	*	*	*			ALW5W5	
		WIRE, ELECTRICAL QQW343TYPESSOFTSNBLK (81349)	FT	50	*	*	*	*	*	*			ALW5W5	
		WIRE, ELECTRICAL QQW343TYPESSOFTSNBLK (81349)	FT	4	*	*	*	*	*	*			ALW5W5	
	6145-557-3591	WIRE, ELECTRICAL WOLFRAM-5% TUNGSTEN (81349)	FT	45	*	*	*	*	*	*			ALW5W5	
		WIRE, ELECTRICAL QQW343TYPESSOFTSNBLK (81349)	FT	3	*	*	*	*	*	*			ALW5W5	
		WIRE, ELECTRICAL QQW343TYPESSOFTSNBLK (81349)	FT	88	*	*	*	*	*	*			ALW5W5	
		WIRE, ELECTRICAL QQW343TYPESSOFTSNBLK (81349)	FT	10	*	*	*	*	*	*			ALW5W5	
	6145-160-5027	WIRE, ELECTRICAL WOLFRAM-5% TUNGSTEN (81349)	FT	6	*	*	*	*	*	*			ALW5W5	



EL 6625-519-40P-1-110-1

Figure 2-1. Test set, navigational coupler, front view.

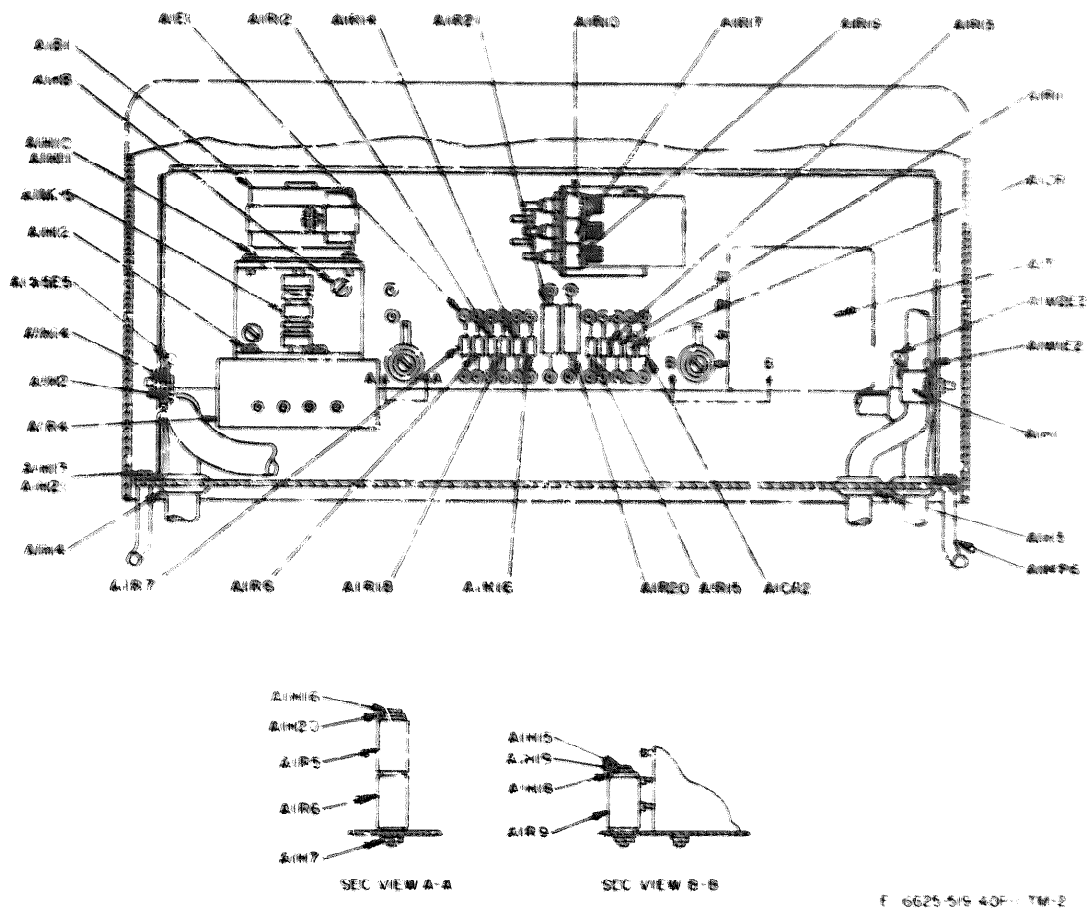


Figure 2-2. Test set, navigational coupler, top view.

SECTION III. INDEX FEDERAL STOCK NUMBER AND REFERENCE NUMBER CROSS REFERENCE
TO FIGURE AND ITEM NUMBER OR REFERENCE DESIGNATION

FEDERAL STOCK NUMBER	FIGURE NUMBER	ITEM NUMBER OR REF. DESIGNATION	FEDERAL STOCK NUMBER	FIGURE NUMBER	ITEM NUMBER OR REF. DESIGNATION
5305-002-4685	2-2	ALH1	5920-892-9311	2-1	ALJF1
5305-054-6653	2-2	ALH3	5920-892-9311	2-1	ALJF2
5305-054-6670	2-1	ALH7	5930-054-6415	2-1	ALJ3
5305-175-3230	2-2	ALH6	5930-503-3881	2-1	ALJ6
5310-857-5547	2-2	ALH7	5930-655-1513	2-1	ALJ3
5310-929-6395	2-2	ALH21	5930-655-1514	2-1	ALJ4
5325-185-0003	2-2	ALH3	5930-655-1515	2-1	ALJ3
5330-198-6163	2-2	ALH9	5930-655-1517	2-1	ALJ7
5340-543-4394	2-2	ALH1	5930-655-1521	2-1	ALJ5
5340-598-4201	2-2	ALH2	5930-655-1521	2-1	ALJ9
5305-556-0145	2-1	ALH6	5930-655-1521	2-1	ALJ10
5355-559-8943	2-2	ALH5	5930-655-1521	2-1	ALJ11
5905-103-8348	2-2	ALR12	5930-655-1521	2-1	ALJ12
5905-103-8348	2-2	ALR13	5935-061-3074	2-1	ALJ5P2
5905-103-8348	2-2	ALR14	5935-109-0150	2-1	ALJ1
5905-106-9344	2-2	ALR13	5935-109-0150	2-1	ALJ7
5905-118-8587	2-1	ALH7	5935-109-0150	2-1	ALJ17
5905-116-8567	2-1	ALH8	5935-109-0150	2-1	ALJ18
5905-141-0598	2-2	ALR15	5935-109-0150	2-1	ALJ19
5905-141-0598	2-2	ALR16	5935-109-0150	2-1	ALJ20
5905-141-1130	2-2	ALR11	5935-109-0150	2-1	ALJ21
5905-500-6892	2-2	ALR17	5935-109-0150	2-1	ALJ22
5905-615-2054	2-1	ALR1	5935-109-0150	2-1	ALJ23
5905-857-5353	2-2	ALR6	5935-109-0150	2-1	ALJ24
5905-874-3378	2-1	ALR2	5935-109-0150	2-1	ALJ24
5905-874-3378	2-1	ALR3	5935-109-0150	2-1	ALJ25
5905-892-6516	2-2	ALR20	5935-109-0150	2-1	ALJ26
5905-892-6516	2-2	ALR21	5935-109-0150	2-1	ALJ27
5905-892-6517	2-2	ALR5	5935-109-0150	2-1	ALJ28
5905-892-6517	2-2	ALR9	5935-109-0150	2-1	ALJ29
5920-280-4465	2-1	ALF2	5935-109-0150	2-1	ALJ30
5920-877-9934	2-1	ALF1	5935-109-0150	2-1	ALJ31

SECTION III. INDEX FEDERAL STOCK NUMBER AND REFERENCE NUMBER CROSS REFERENCE
TO FIGURE AND ITEM NUMBER OR REFERENCE DESIGNATION (CONTINUED)

FEDERAL STOCK NUMBER	FIGURE NUMBER	ITEM NUMBER OR REF. DESIGNATION	FEDERAL STOCK NUMBER	FIGURE NUMBER	ITEM NUMBER OR REF. DESIGNATION
5935-109-0150	2-1	AIJ32	5935-109-0150	2-1	AIJ64
5935-109-0150	2-1	AIJ33	5935-109-0150	2-1	AIJ65
5935-109-0150	2-1	AIJ34	5935-109-0150	2-1	AIJ66
5935-109-0150	2-1	AIJ35	5935-109-0150	2-1	AIJ67
5935-109-0150	2-1	AIJ36	5935-109-0150	2-1	AIJ68
5935-109-0150	2-1	AIJ37	5935-578-2358	2-1	AIW382
5935-109-0150	2-1	AIJ38	5935-702-4199	2-1	AIJ2
5935-109-0150	2-1	AIJ39	5935-702-4199	2-1	AIJ8
5935-109-0150	2-1	AIJ40	5935-903-3513	2-1	AIW5P1
5935-109-0150	2-1	AIJ41	5940-230-9911		AIW4E4
5935-109-0150	2-1	AIJ42	5940-269-2219	2-1	AIJ3
5935-109-0150	2-1	AIJ43	5940-269-2219	2-1	AIJ5
5935-109-0150	2-1	AIJ44	5940-280-3829		AIW4E3
5935-109-0150	2-1	AIJ45	5940-356-2493	2-1	AIJ4
5935-109-0150	2-1	AIJ46	5940-256-2493	2-1	AIJ6
5935-109-0150	2-1	AIJ47	5940-502-7688		AIW4E2
5935-109-0150	2-1	AIJ48	5940-549-6220		AIW5E2
5935-109-0150	2-1	AIJ49	5940-577-7143	2-2	AIJ1
5935-109-0150	2-1	AIJ50	5940-615-8954		AIW4E3
5935-109-0150	2-1	AIJ51	5940-665-9580		AIW5E4
5935-109-0150	2-1	AIJ52	5940-762-8255		AIW5E1
5935-109-0150	2-1	AIJ53	5940-809-4120	2-2	AIW1E2
5935-109-0150	2-1	AIJ54	5940-809-4120	2-2	AIW2E2
5935-109-0150	2-1	AIJ55	5940-809-4120	2-2	AIW5E5
5935-109-0150	2-1	AIJ56	5940-966-3657	2-1	AIW1E1
5935-109-0150	2-1	AIJ57	5940-966-3657	2-1	AIW2E1
5935-109-0150	2-1	AIJ58	5940-966-3657	2-1	AIW5E3
5935-109-0150	2-1	AIJ59	5950-074-4635	2-2	AIJ1
5935-109-0150	2-1	AIJ60	5961-985-4900	2-2	AIJCR1
5935-109-0150	2-1	AIJ61	5961-985-4900	2-2	AIJCR2
5935-109-0150	2-1	AIJ62	5995-482-6318	2-1	AIW2
5935-109-0150	2-1	AIJ63	5995-482-6321	2-1	AIW1

SECTION III. INDEX FEDERAL STOCK NUMBER AND REFERENCE NUMBER CROSS REFERENCE TO FIGURE AND ITEM NUMBER OR REFERENCE DESIGNATION (CONTINUED)

FEDERAL STOCK NUMBER	FIGURE NUMBER	ITEM NUMBER OR REF. DESIGNATION	FEDERAL STOCK NUMBER	FIGURE NUMBER	ITEM NUMBER OR REF. DESIGNATION
6145-126-1606	2-1	ALW1W1		MFG. CODE	FIG. NO.
6145-126-1606	2-1	ALW2W1	FHM36G1	81349	2-1
6145-160-5027	2-1	ALW3W3	FHN26G1	81349	2-1
6145-557-3591	2-1	ALW3W4	F02A250V1A8	81349	2-1
6145-823-2430		ALW3W3	F02A250V1A8	81349	2-1
6210-232-8166	2-1	ALXDS3	FTM7P16WHITE	98291	2-1
6210-232-8166	2-1	ALXDS4	M11W13169AWCG18BLK	81349	2-1
6210-232-8166	2-1	ALXDS5	M1LW16878-2TYPECAWG22	81349	2-1
6210-232-8166	2-1	ALXDS6	MILW16878-2TYPECAWG22BLK	81349	
6210-232-8166	2-1	ALXDS7	MILW16878-2TYPECAWG22BLK	81349	2-1
6210-232-8166	2-1	ALXDS8	MILW16878-2TYPECAWG22BLU	81349	
6210-260-7652	2-1	ALXDS1	MILW16878-2TYPECAWG22BLU	81349	2-1
6210-448-4297	2-1	ALXDS2	MILW16878-2TYPECAWG22GRN	81349	
6240-155-8707	2-1	A1DS1	MILW16878-2TYPECAWG22GRN	81349	2-1
6240-155-8707	2-1	A1DS3	MILW16878-2TYPECAWG22ORN	81349	
6240-155-8707	2-1	A1DS4	MILW16878-2TYPECAWG22ORN	81349	2-1
6240-155-8707	2-1	A1DS5	MILW16878-2TYPECAWG22RED	81349	2-1
6240-155-8707	2-1	A1DS6	MILW16878-2TYPECAWG22YEL	81349	2-1
6240-155-8707	2-1	A1DS7	MS15571-6	96906	2-1
6240-155-8707	2-1	A1DS8	MS15571-6	96906	2-1
6240-223-9100	2-1	A1DS2	MS15571-6	96906	2-1
6625-987-8635		A1	MS15571-6	96906	2-1
REFERENCE NO.	MFG. CODE	FIG. NO.	REFERENCE DESIGNATION	MS15571-6	96906
AN6227-14	88044	2-2	ALH9	MS15571-6	96906
A211	98376		ALMP4	MS15571-6	96906
B24154	82227	2-2	ALB1	MS16108-2C	96906
CE41C250K	81349	2-2	ALC1	MS16108-2C	96906
COHGF3-18-0410	81349	2-1	ALW1W1	MS16108-3C	96906
COHGF3-18-0410	81349	2-1	ALW2W1	MS16108-3C	96906
DF30BC	58474	2-1	ALJ3	MS16108-3C	96906
DF30BC	58474	2-1	ALJ5	MS16108-3C	96906
DF30BC	58474	2-1	ALJ4	MS16108-3C	96906
DF30BC	58474	2-1	ALJ6	MS16108-3C	96906
				MS16108-3C	96906

SECTION III. INDEX FEDERAL STOCK NUMBER AND REFERENCE NUMBER CROSS REFERENCE
TO FIGURE AND ITEM NUMBER OR REFERENCE DESIGNATION (CONTINUED)

FEDERAL STOCK NUMBER		FIGURE NUMBER	ITEM NUMBER OR REF. DESIGNATION	FEDERAL STOCK NUMBER		FIGURE NUMBER	ITEM NUMBER OR REF. DESIGNATION
REFERENCE NO.	MFG. CODE	FIG. NO.	REFERENCE DESIGNATION	REFERENCE NO.	MFG. CODE	FIG. NO.	REFERENCE DESIGNATION
MS16108-3C	96906	2-1	ALJ21	MS16108-3C	96906	2-1	ALJ53
MS16108-3C	96906	2-1	ALJ22	MS16108-3C	96906	2-1	ALJ54
MS16108-3C	96906	2-1	ALJ23	MS16108-3C	96906	2-1	ALJ55
MS16108-3C	96906	2-1	ALJ24	MS16108-3C	96906	2-1	ALJ56
MS16108-3C	96906	2-1	ALJ25	MS16108-3C	96906	2-1	ALJ57
MS16108-3C	96906	2-1	ALJ26	MS16108-3C	96906	2-1	ALJ58
MS16108-3C	96906	2-1	ALJ27	MS16108-3C	96906	2-1	ALJ59
MS16108-3C	96906	2-1	ALJ28	MS16108-3C	96906	2-1	ALJ60
MS16108-3C	96906	2-1	ALJ29	MS16108-3C	96906	2-1	ALJ61
MS16108-3C	96906	2-1	ALJ30	MS16108-3C	96906	2-1	ALJ62
MS16108-3C	96906	2-1	ALJ31	MS16108-3C	96906	2-1	ALJ63
MS16108-3C	96906	2-1	ALJ32	MS16108-3C	96906	2-1	ALJ64
MS16108-3C	96906	2-1	ALJ33	MS16108-3C	96906	2-1	ALJ65
MS16108-3C	96906	2-1	ALJ34	MS16108-3C	96906	2-1	ALJ66
MS16108-3C	96906	2-1	ALJ35	MS16108-3C	96906	2-1	ALJ67
MS16108-3C	96906	2-1	ALJ36	MS16108-3C	96906	2-1	ALJ68
MS16108-3C	96906	2-1	ALJ37	MS20365D632A	96906	2-2	ALH7
MS16108-3C	96906	2-1	ALJ38	MS20365D632A	96906	2-2	ALH8
MS16108-3C	96906	2-1	ALJ39	MS21318-14	96906	2-2	ALH10
MS16108-3C	96906	2-1	ALJ40	MS21919DG11	96906	2-2	ALH2
MS16108-3C	96906	2-1	ALJ41	MS21919DG6	96906	2-2	ALH1
MS16108-3C	96906	2-1	ALJ42	MS25036-7	96906	2-2	ALW1E2
MS16108-3C	96906	2-1	ALJ43	MS25036-7	96906	2-2	ALW2E2
MS16108-3C	96906	2-1	ALJ44	MS25036-7	96906	2-2	ALW5E5
MS16108-3C	96906	2-1	ALJ45	MS35058-21	96906	2-1	ALS3
MS16108-3C	96906	2-1	ALJ46	MS35058-22	96906	2-1	ALS4
MS16108-3C	96906	2-1	ALJ47	MS35058-23	96906	2-1	ALS8
MS16108-3C	96906	2-1	ALJ48	MS35058-26	96906	2-1	ALS7
MS16108-3C	96906	2-1	ALJ49	MS35058-29	96906	2-1	ALS5
MS16108-3C	96906	2-1	ALJ50	MS35058-29	96906	2-1	ALS9
MS16108-3C	96906	2-1	ALJ51	MS35058-29	96906	2-1	ALS10
MS16108-3C	96906	2-1	ALJ52	MS35058-29	96906	2-1	ALS11

SECTION III. INDEX FEDERAL STOCK NUMBER AND REFERENCE NUMBER CROSS REFERENCE TO FIGURE AND ITEM NUMBER OR REFERENCE DESIGNATION (CONTINUED)

FEDERAL STOCK NUMBER	FIGURE NUMBER	ITEM NUMBER OR REF. DESIGNATION	FEDERAL STOCK NUMBER	FIGURE NUMBER	ITEM NUMBER OR REF. DESIGNATION
	MFG. CODE	FIG. NO. REFERENCE DESIGNATION	REFERENCE NO.	MFG. CODE	FIG. NO. REFERENCE DESIGNATION
MS35058-29	96906	2-1 A1S12	RC20GF332J	81349	2-2 A1R14
MS35058-30	96906	2-1 A1S6	RC20GF561J	81349	2-2 A1R15
MS35059-22	96906	2-1 A1S1	RC20GF561J	81349	2-2 A1R16
MS35233-27	96906	2-2 A1H12	RC20CF750J	81349	2-1 A1R7
MS35233-29	96906	2-2 A1H13	RC20GF750J	81349	2-1 A1R8
MS35233-30	96906	2-2 A1H14	RV6LAYS A102B	81349	2-2 A1R17
MS35233-36	96906	2-2 A1H15	RV6LAYS A103B	81349	2-2 A1R10
MS35233-45	96906	2-1 A1H17	RV6LAYS A103B	81349	2-2 A1R19
MS35338-136	96906	2-2 A1H21	STEM102P16	98291	2-2 A1E1
TextMS35489-42	96906	2-2 A1H3	YIC071	09922	A1W4E3
MS91528-1K2B	96906	2-1 A1H6	YIC080	09922	A1W5E2
NE51	81349	2-1 A1D82	YOC80	09922	A1W4E1
PTO6E16-26SWR	77820	2-1 A1W5P1	YCC90	09922	A1W4E2
PTO9E16-26SYSR	77820	2-1 A1W5P2	YOC100	09922	A1W5E1
P695302AWG22RED	07187	A1W4W1	0164-4	07187	2-2 A1R20
QQW34TYPESSOFTSN	81349	A1W3W5	0188-7	56272	2-2 A1H19
QQW343TYPESSOFTSNBLK	81349	A1W4W1	047-96	07187	2-2 A1H11
QQW343TYPESSOFTSNBLU	81349	A1W4W6	0453-239	07187	2-2 A1H16
QQW343TYPESSOFTSNGRN	81349	A1W4W5	1N646	81349	2-2 A1CR1
QQW343TYPESSOFTSNORN	81349	A1W4W3	1N646	81349	2-2 A1CR2
QQW343TYPESSOFTSNRED	81349	A1W4W2	18-16H	95238	2-1 A1W5P3E2
QQW343TYPESSOFTSNYEL	81349	A1W4W4	2503304-928	07187	2-1 A1S2
RA20NASD3R0A	81349	2-1 A1R1	2553985	07187	2-2 A1MP6
RB17CE10002F	81349	2-2 A1R6	2554025	07187	2-1 A1W5P3MP1
RB17CE30101F	81349	2-2 A1R5	2554070	07187	A1MP2
RB17CE30101F	81349	2-2 A1R9	2554098	07187	2-1 A1W5P3
RB52CE5R110F	81349	2-2 A1R20	2579037	07187	2-1 A1W1
RB52CE5R110F	81349	2-2 A1R21	2579038	07187	2-1 A1W2
RC20GF101J	81349	2-2 A1R18	2580152-4	07187	2-1 A1MP8
RC20GF272J	81349	2-2 A1R11	2585609	07187	A1MP3
RC20GF332J	81349	2-2 A1R12	2585639	07187	A1MP7
RC20GF332J	81349	2-2 A1R13	2585913	07187	A1W4

SECTION III. INDEX FEDERAL STOCK NUMBER AND REFERENCE NUMBER CROSS REFERENCE TO FIGURE AND ITEM NUMBER OR REFERENCE DESIGNATION (CONTINUED)

FEDERAL STOCK NUMBER	FIGURE NUMBER	ITEM NUMBER OR REF. DESIGNATION		FEDERAL STOCK NUMBER	FIGURE NUMBER	ITEM NUMBER OR REF. DESIGNATION	
REFERENCE NO.	MFG. CODE	FIG. NO.	REFERENCE DESIGNATION				
2585914	07187	2-1	A1W5				
2585915	07187	2-1	A1W3				
2875	14370		A1W5H1				
2875	14370	2-2	A1R4				
293078	56232	2-2	A1H16				
30AG1	97235	2-2	A1R4				
300-09679	77221	2-1	A1M0				
34130	00779		A1W5E4				
34136	00779		A1W4E4				
600	76545	2-1	A1W1F4				
6 0 0	76545	2-1	A1WCP5				
6 0 0	76545	2-1	A1W5P6				
62BLACK	76545	2-1	A1W1E1				
62BLACK	76545	2-1	A1W2E1				
62BLACK	76545	2-1	A1W5E3				
738872-1	56232	2-1	A1R2				
738872-1	56232	2-1	A1R3				
741686-1	07187	2-2	A1MP5				
741860	56232		A1MP1				
81-0408-0117-271	72619	2-1	A1XDS2				
81410-112	72619	2-1	A1XDS3				
81410-112	72619	2-1	A1XDS4				
81410-112	72619	2-1	A1XDS5				
81410-112	72619	2-1	A1XDS6				
81410-112	72619	2-1	A1XDS7				
81410-112	72619	2-1	A1XDS8				
81410-116	72619	2-1	A1XDS1				
90-5-20	49956	2-1	A1H5				
950-1311-400	83003	2-2	A1T1				

SECTION IV. INDEX REFERENCE DESIGNATION
CROSS REFERENCE TO PAGE NUMBER

REFERENCE DESIGNATION	PAGE NUMBER	REFERENCE DESIGNATION	PAGE NUMBER	REFERENCE DESIGNATION	PAGE NUMBER
AL	2-1	ALH18	2-7	ALJ38	2-3
ALB1	2-4	ALH19	2-7	ALJ39	2-3
ALC1	2-1	ALH20	2-7	ALJ40	2-3
ALCR1	2-6	ALH21	2-7	ALJ41	2-3
ALCR2	2-6	ALJ1	2-2	ALJ42	2-3
ALDS1	2-4	ALJ2	2-2	ALJ43	2-3
ALDS2	2-4	ALJ3	2-5	ALJ44	2-3
ALDS3	2-4	ALJ4	2-5	ALJ45	2-3
ALDS4	2-4	ALJ5	2-5	ALJ46	2-3
ALDS5	2-4	ALJ6	2-5	ALJ47	2-3
ALDS6	2-4	ALJ7	2-2	ALJ48	2-3
ALDS7	2-4	ALJ8	2-2	ALJ49	2-3
ALDS8	2-4	ALJ17	2-2	ALJ50	2-3
ALB1	2-7	ALJ18	2-2	ALJ51	2-3
ALF1	2-1	ALJ19	2-2	ALJ52	2-3
ALF2	2-1	ALJ20	2-2	ALJ53	2-3
ALH1	2-1	ALJ21	2-2	ALJ54	2-3
ALH2	2-1	ALJ22	2-2	ALJ55	2-4
ALH3	2-1	ALJ23	2-2	ALJ56	2-4
ALH4	2-1	ALJ24	2-2	ALJ57	2-4
ALH5	2-4	ALJ25	2-2	ALJ58	2-4
ALH6	2-4	ALJ26	2-2	ALJ59	2-4
ALH7	2-5	ALJ27	2-2	ALJ60	2-4
ALH8	2-5	ALJ28	2-2	ALJ61	2-4
ALH9	2-5	ALJ29	2-2	ALJ62	2-4
ALH10	2-6	ALJ30	2-3	ALJ63	2-4
ALH11	2-6	ALJ31	2-3	ALJ64	2-4
ALH12	2-6	ALJ32	2-3	ALJ65	2-4
ALH13	2-6	ALJ33	2-3	ALJ66	2-4
ALH14	2-6	ALJ34	2-3	ALJ67	2-4
ALH15	2-6	ALJ35	2-3	ALJ68	2-4
ALH16	2-6	ALJ36	2-3	ALM1	2-7
ALH17	2-6	ALJ37	2-3		

SECTION IV. INDEX REFERENCE DESIGNATION
CROSS REFERENCE TO PAGE NUMBER (CONTINUE)

REFERENCE DESIGNATION	PAGE NUMBER	REFERENCE DESIGNATION	PAGE NUMBER	REFERENCE DESIGNATION	PAGE NUMBER
A1MP1	2-1	A1S5	2-7	A1W4W6	2-8
A1MP2	2-1	A1S6	2-6	A1W5	2-7
A1MP3	2-1	A1S7	2-7	A1W5E1	2-8
A1MP4	2-1	A1S8	2-6	A1W5E2	2-8
A1MP5	2-1	A1S9	2-7	A1W4E4	2-7
A1MP6	2-2	A1S10	2-7	A1W5E3	2-8
A1MP7	2-5	A1S11	2-7	A1W5E4	2-8
A1MP8	2-5	A1S12	2-7	A1W5E5	2-8
A1R1	2-6	A1T1	2-7	A1W5H1	2-8
A1R2	2-6	A1W1	2-1	A1W5P1	2-7
A1R3	2-6	A1W1E1	2-1	A1W5P2	2-7
A1R4	2-6	A1W1E2	2-1	A1W5P3	2-8
A1R5	2-5	A1W1P4	2-1	A1W5P3E1	2-8
A1R6	2-5	A1W1W1	2-1	A1W5P3E2	2-8
A1R7	2-5	A1W2	2-1	A1W5P3MP1	2-8
A1R8	2-5	A1W2E1	2-1	A1W5P6	2-7
A1R9	2-5	A1W2E2	2-1	A1W5W1	2-8
A1R10	2-6	A1W2P5	2-1	A1W5W2	2-8
A1R11	2-5	A1W2W1	2-1	A1W5W3	2-8
A1R12	2-5	A1W3	2-4	A1W5W4	2-8
A1R13	2-5	A1W3W1	2-5	A1W5W5	2-8
A1R14	2-5	A1W3W2	2-5	A1W5W6	2-8
A1R15	2-5	A1W3W3	2-5	A1W5W7	2-8
A1R16	2-5	A1W3W4	2-5	A1W5W8	2-8
A1R17	2-6	A1W3W5	2-5	A1XDS1	2-2
A1R18	2-5	A1W4	2-7	A1XDS2	2-2
A1R19	2-6	A1W4E1	2-7	A1XDS3	2-2
A1R20	2-6	A1W4E2	2-7	A1XDS4	2-2
A1R21	2-6	A1W4E3	2-7	A1XDS5	2-2
A1S1	2-6	A1W4W1	2-7	A1XDS6	2-2
A1S2	2-6	A1W4W2	2-7	A1XDS7	2-2
A1S3	2-6	A1W4W3	2-8	A1XDS8	2-2
A1S4	2-6	A1W4W4	2-8	A1XF1	2-1
		A1W4W5	2-8	A1XF2	2-1

By Order of the Secretary of the Army:

CREIGHTON W. ABRAMS
General, United States Army
Chief of Staff

Official:

VERNE L. BOWERS
Major General, United States Army
The Adjutant General

Distribution:

To be distributed in accordance with DA Form 12-36, Section I (qty rqr block No. 233) Direct and General Support Maintenance requirements for AN/ASW-12.

U.S. GOVERNMENT PRINTING OFFICE: 1973-748111/703

END

01-03-83

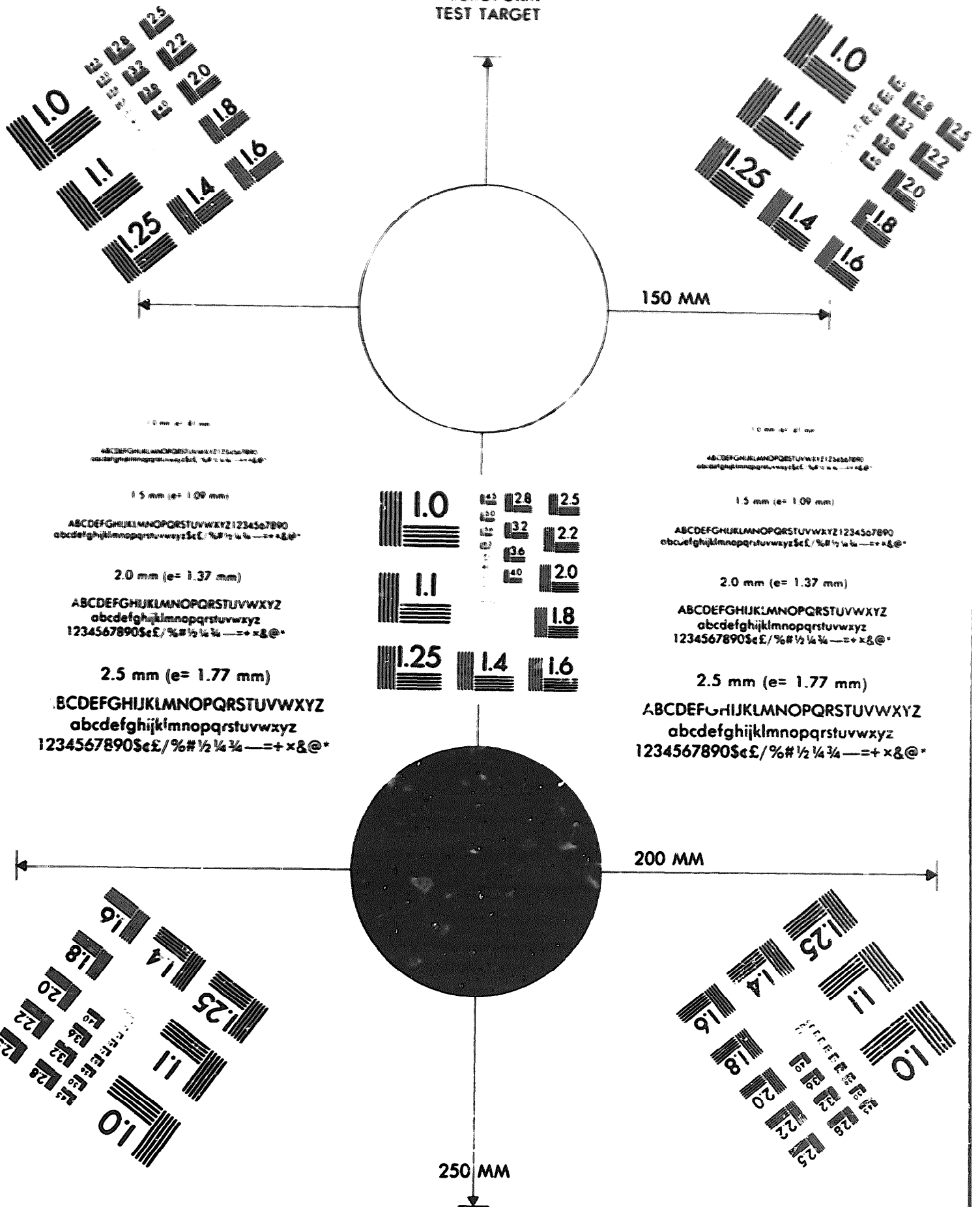
DATE





DEPARTMENT OF THE ARMY

MICROFORM TEST TARGET



150 MM

200 MM

250 MM

1.0 mm (e= 0.1 mm)
ABCDEFGHIJKLMNQRSTUWXYZ1234567890
abcdefghijklmnopqrstuvwxyz\$%#1/21/43/4=+x&@*

1.5 mm (e= 1.09 mm)
ABCDEFGHIJKLMNQRSTUWXYZ1234567890
abcdefghijklmnopqrstuvwxyz\$%#1/21/43/4=+x&@*

2.0 mm (e= 1.37 mm)
ABCDEFGHIJKLMNQRSTUWXYZ
abcdefghijklmnopqrstuvwxyz
1234567890\$%#1/21/43/4=+x&@*

2.5 mm (e= 1.77 mm)
ABCDEFGHIJKLMNQRSTUWXYZ
abcdefghijklmnopqrstuvwxyz
1234567890\$%#1/21/43/4=+x&@*

1.0 mm (e= 0.1 mm)
ABCDEFGHIJKLMNQRSTUWXYZ1234567890
abcdefghijklmnopqrstuvwxyz\$%#1/21/43/4=+x&@*

1.5 mm (e= 1.09 mm)
ABCDEFGHIJKLMNQRSTUWXYZ1234567890
abcdefghijklmnopqrstuvwxyz\$%#1/21/43/4=+x&@*

2.0 mm (e= 1.37 mm)
ABCDEFGHIJKLMNQRSTUWXYZ
abcdefghijklmnopqrstuvwxyz
1234567890\$%#1/21/43/4=+x&@*

2.5 mm (e= 1.77 mm)
ABCDEFGHIJKLMNQRSTUWXYZ
abcdefghijklmnopqrstuvwxyz
1234567890\$%#1/21/43/4=+x&@*

1.0 2.8 2.5
1.1 3.2 2.2
1.25 3.6 2.0
1.4 4.0 1.8
1.6